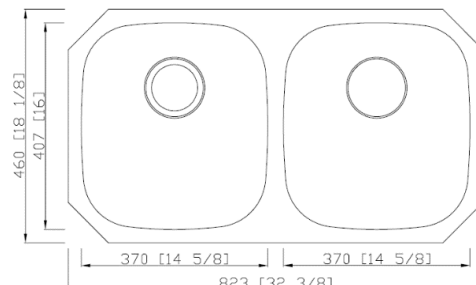




Sinks Catalogue

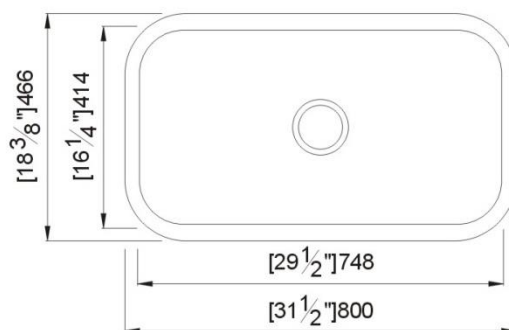
Under-Mount Stainless Steel Sink: SS304 steel, 18 Gauge, Brush Finish

1. Kitchen Double equal sink: EG50-50 (rear drain holes)



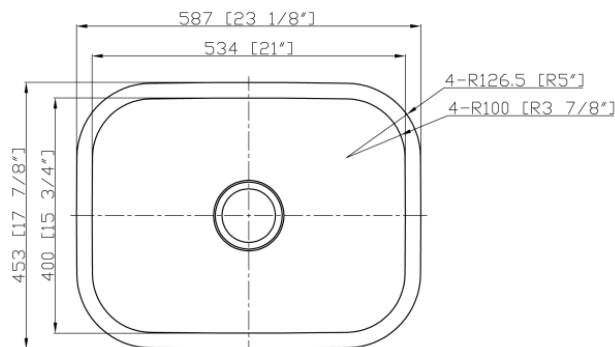
Overall dimensions: 32-3/8" X 18-1/8" X 9" 9"

2. Kitchen single bowl sink: EG3118



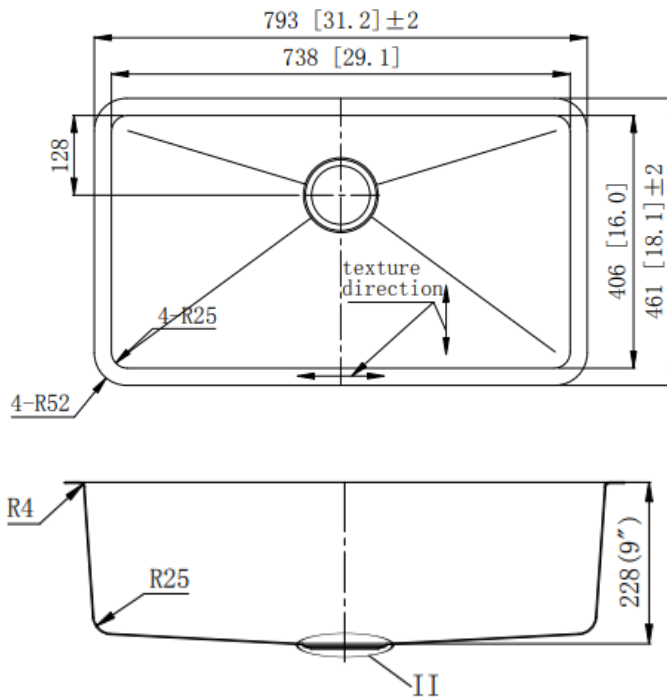
Overall dimension: 31-1/2" X 18-3/8" X 9"

3. Large utility sink: EG2318



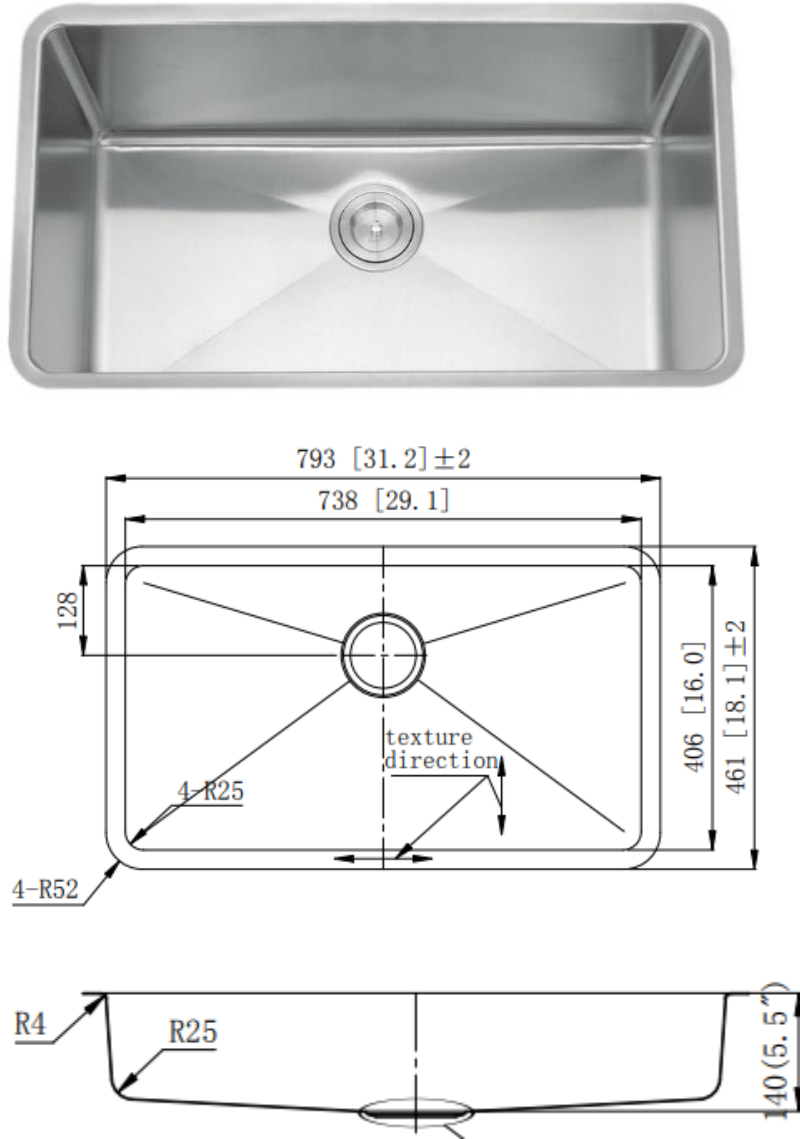
Overall dimensions: 23-1/8" X 17-7/8" X 9"

4. Kitchen single bowl sink with small R corner: EG3118-R25



Overall dimension: 31-1/4" X 18- 1/8" X 9"

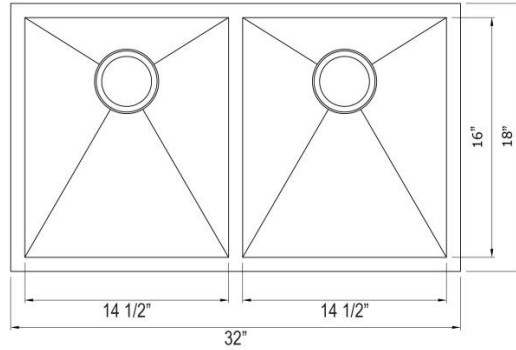
5. Kitchen single bowl sink with small R corner (ADA): EG31186-R25



Overall dimension: 31-1/4" X 18- 1/8" X 5.5"

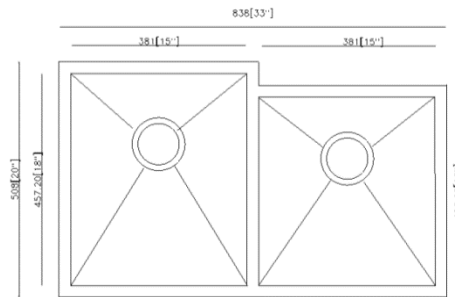
Hand-made stainless-steel sinks: SS304, 18 gauge

1. Double equal: HM3218-DE



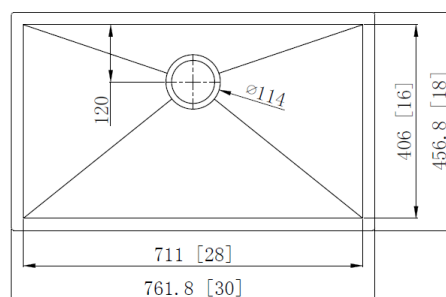
Overall dimension: 32" X 18" X 10"

2. Double unequal: HM3320-DO



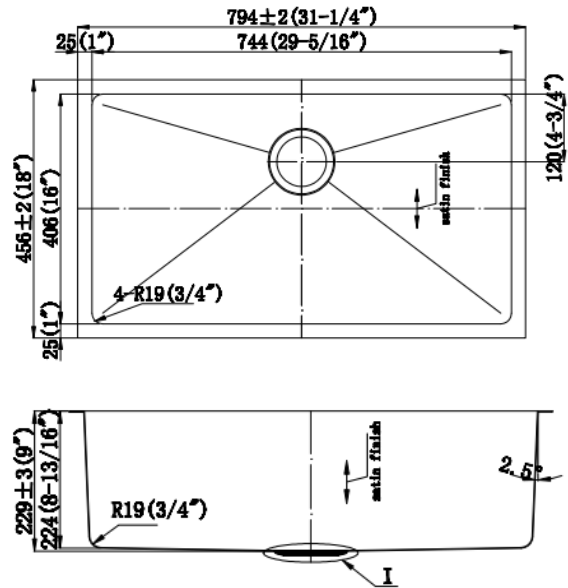
Overall dimension: 33"x 20"x 10"

3. Kitchen single bowl: HM3018-S

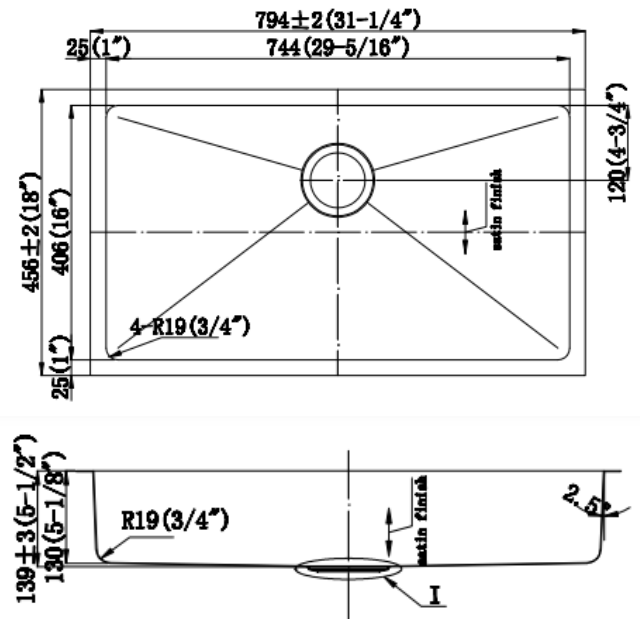


Overall dimension: 30"X18"X10"

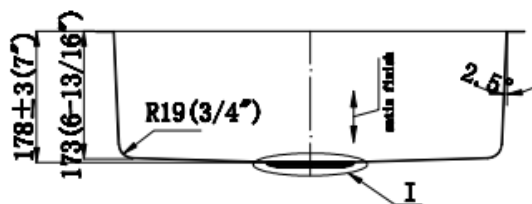
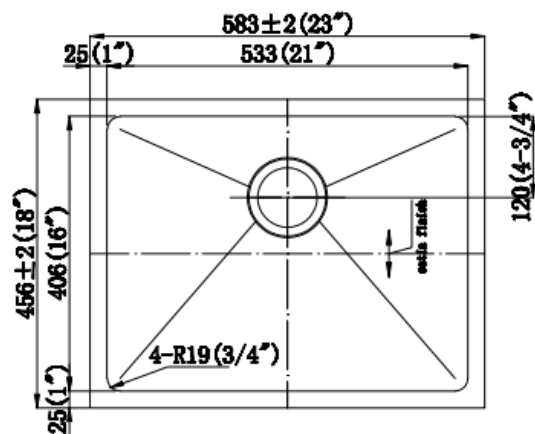
4. HM3118R



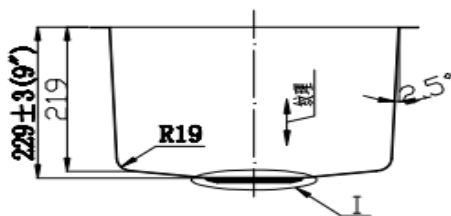
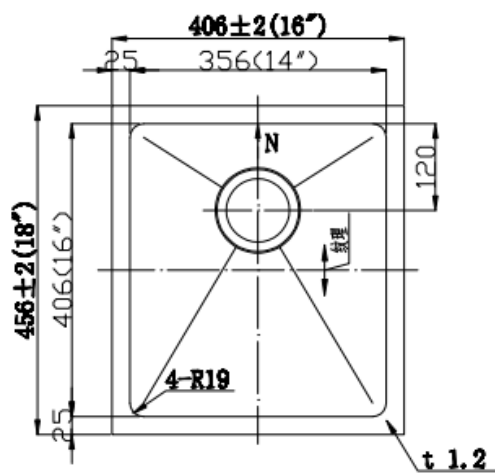
5. HM3118R-6



6. HM2318R

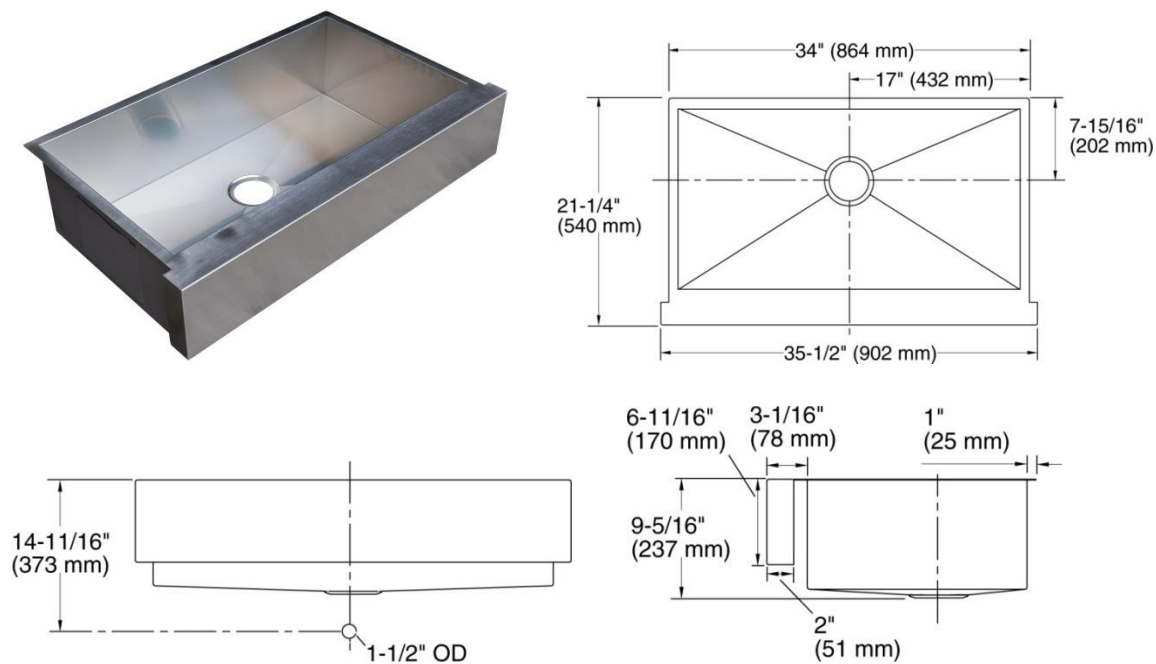


7. HM1816R

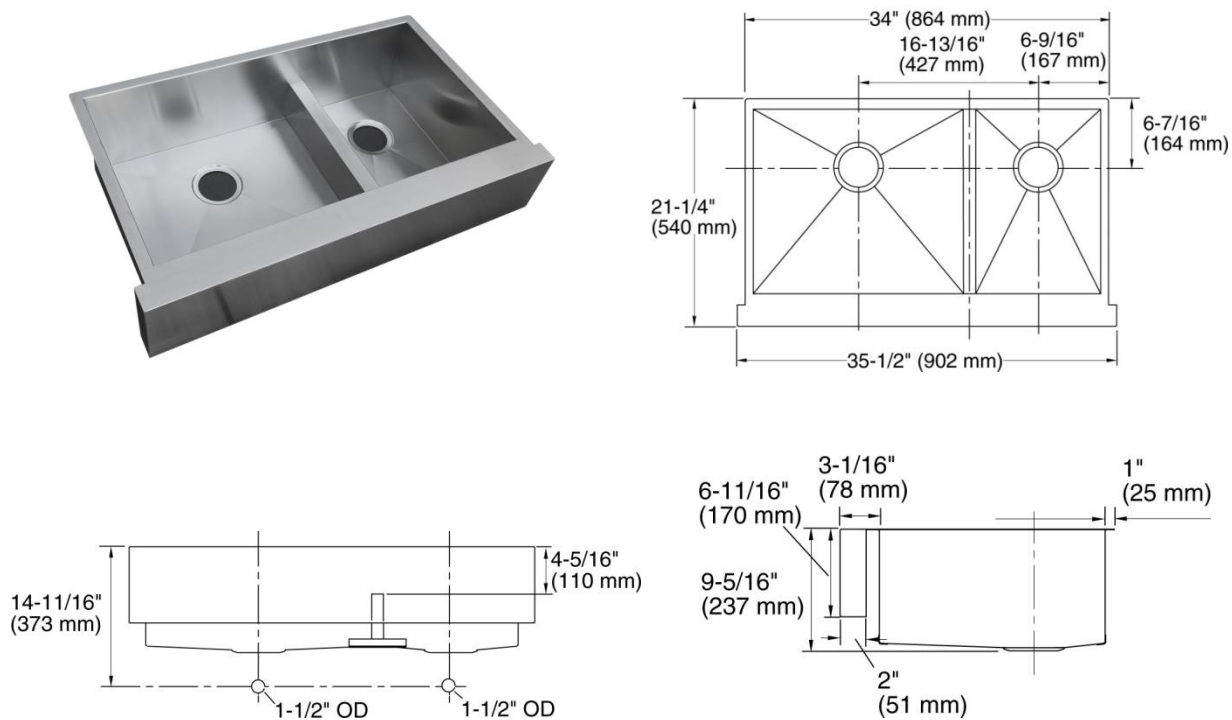


Hand-Made Stainless-Steel Sinks (with Apron): SS304, 18 Gauge

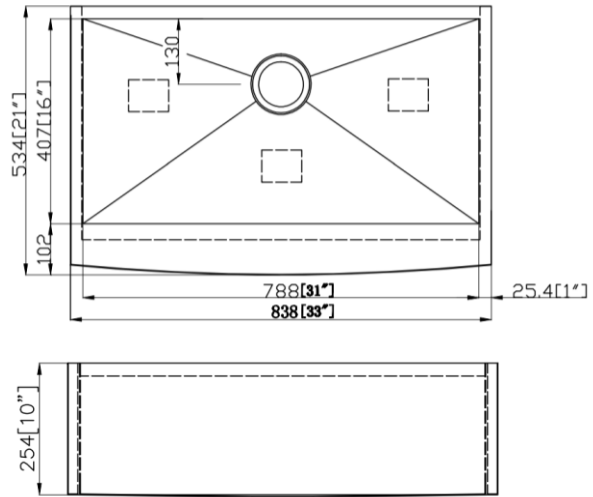
1. AP3521-S (Kitchen single bowl):



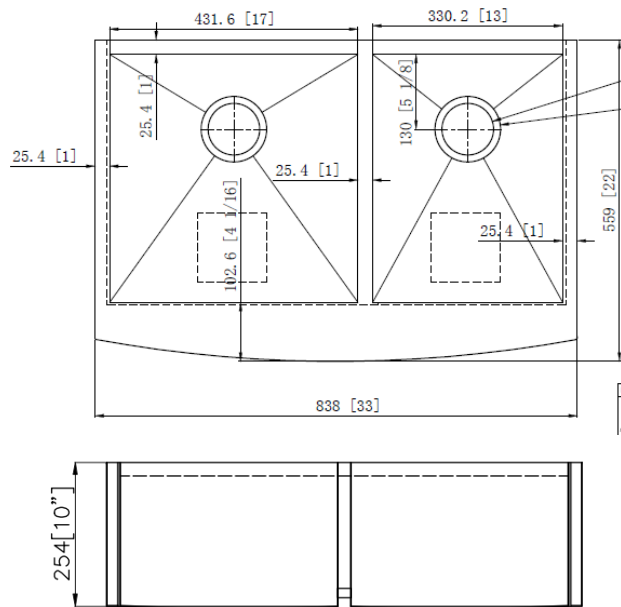
2. AP3521-D (Kitchen double bowl):



3. AP3321-S (Kitchen Single Bowl)

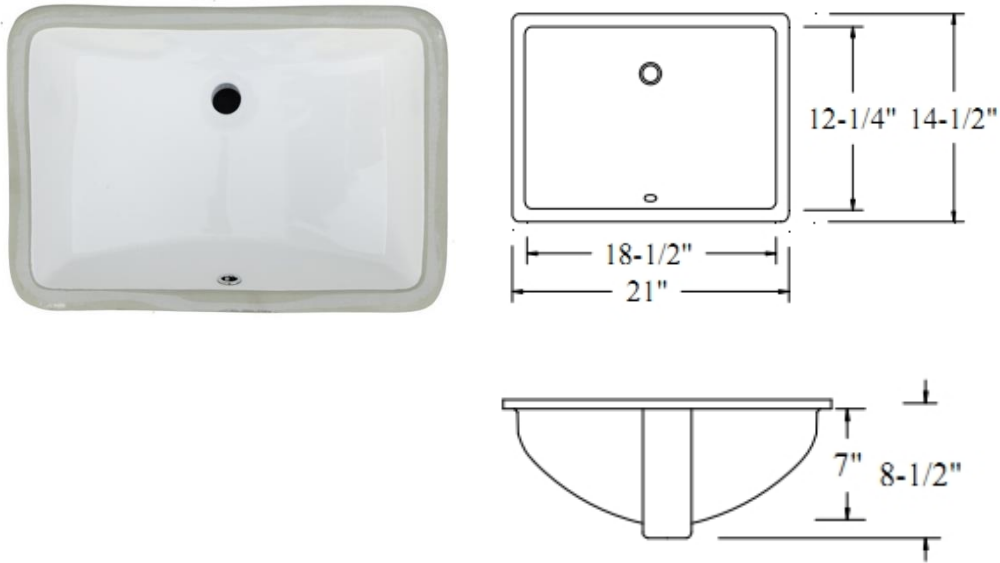


4. AP3322-DO (Kitchen 60/40)



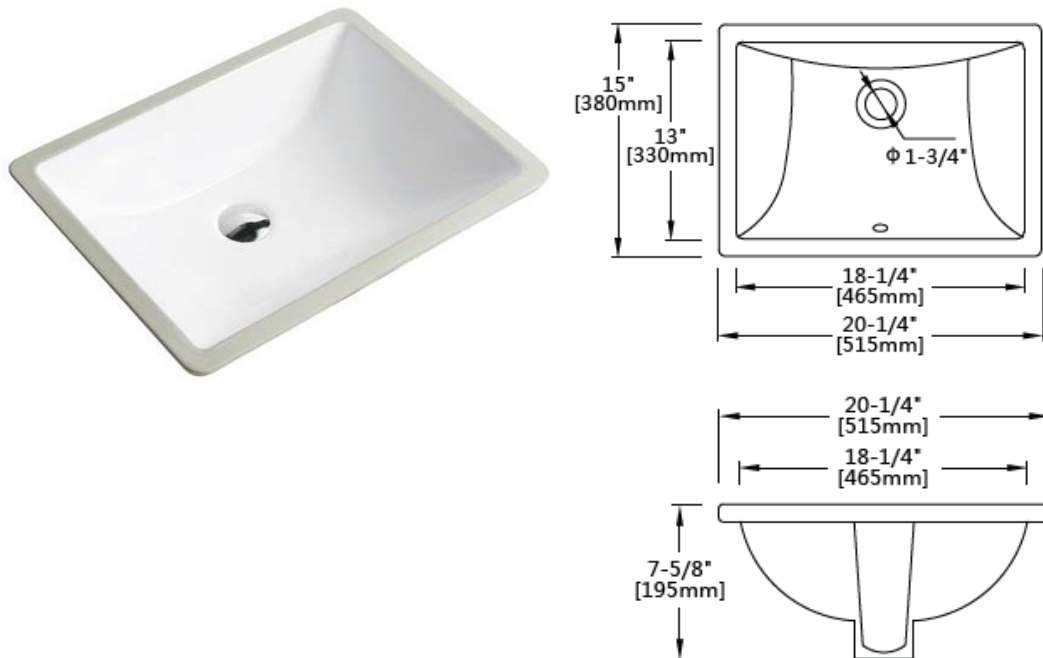
Under-Mount Porcelain Sinks

1. US2114: with 1 overflow holes

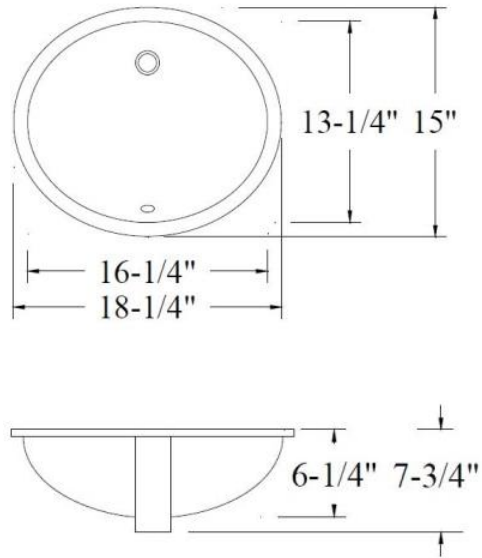


Overall dimensions: 21" X 14-1/2" X 8-1/2"

2. US2015

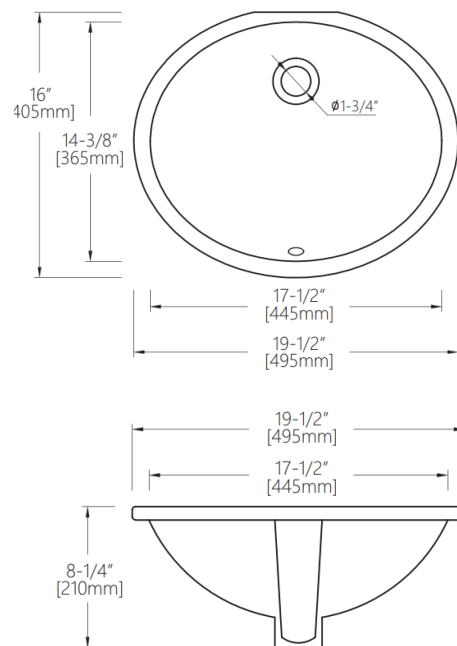


3. UO1815: with 1 overflow hole.



Overall dimensions: 18-1/4" x 15" x 7-3/4"

4. UO1916



5. US2016F

